



QENVi





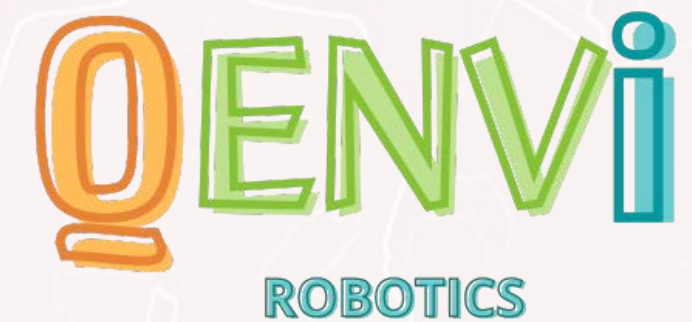
About QENVI Group



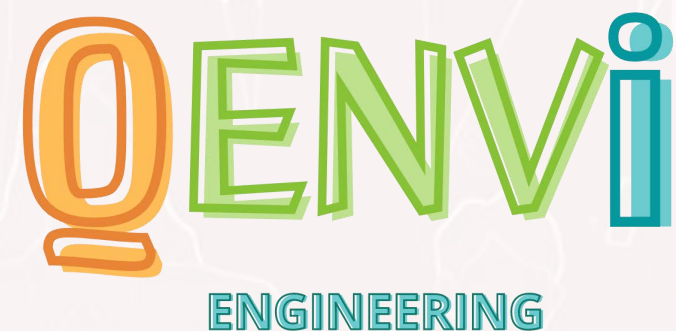
Services in computer engineering, embedded, AI



Following and Autonomous Robots.
Inventory and fleet management software.



Qenvi's journey began in 2008
in Sophia-Antipolis technology park.
The group consists of 4 subsidiaries.



Services in electronic,
Robotic and mechanical engineering



Business strategy consulting QSE, CSR



History

QENVI

2008

QENVI IN SOPHIA-ANTIPOLIS

2016

Creation of the subsidiary QENVI
ROBOTICS Inventory management

2018

CIR accreditation, + 10 patents filed in
Europe
Following Robots

2020

Tailor-made solutions (wheelchairs,
stretchers, hydraulic machines...)

2021

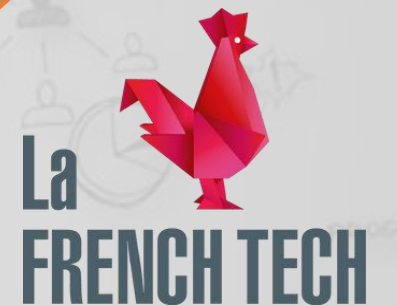
Inauguration of the agency in
Toulouse

2022

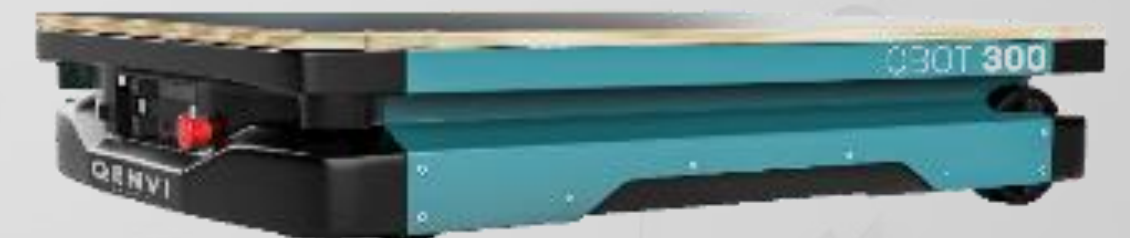
Fleet management
Autonomous Robots

2023

Investors come into play
Inauguration of the agency in Lyon



QENVI has
CIR accreditation





As close as possible to our customers

Our agencies :

Sophia Antipolis

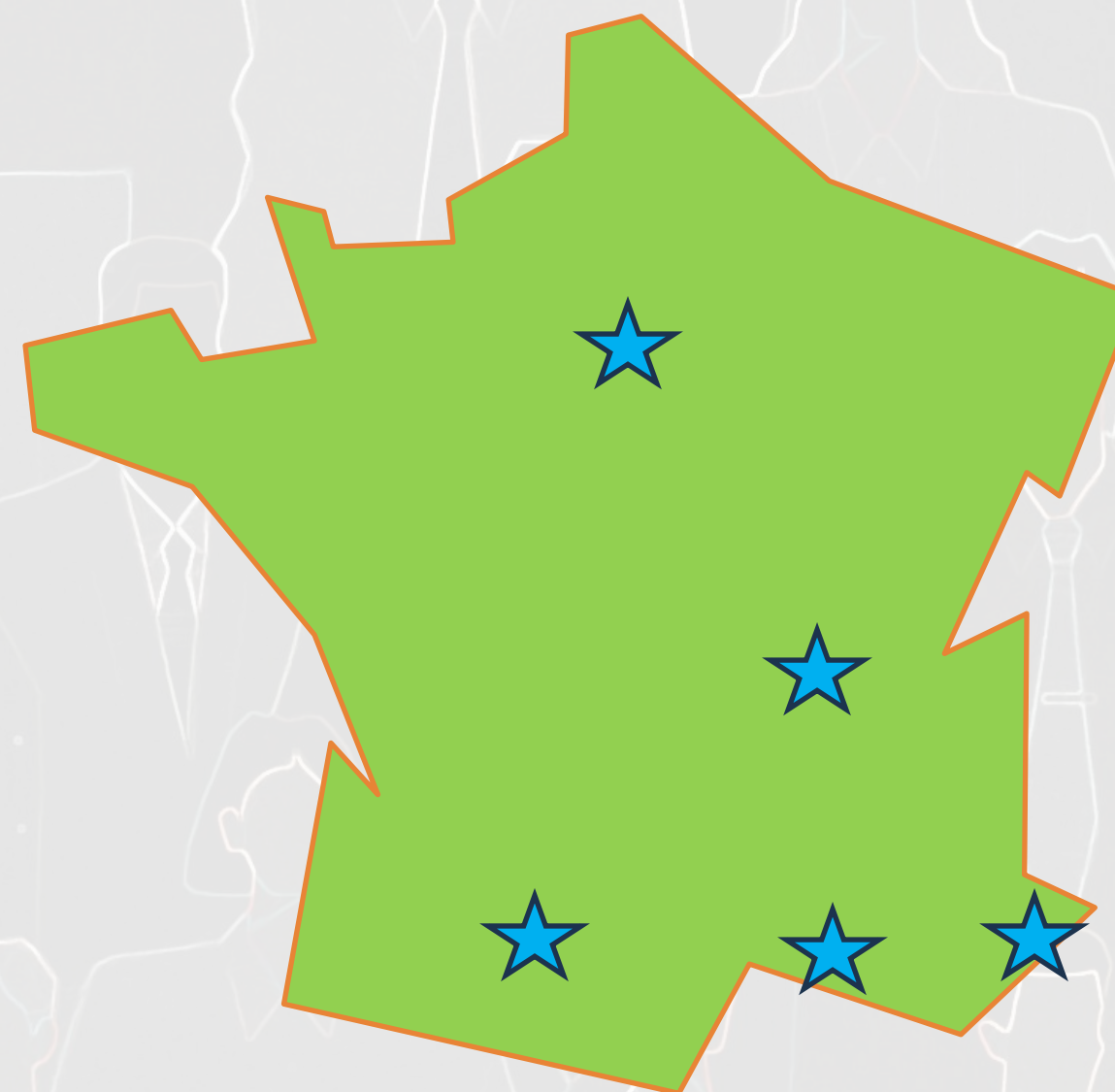
Toulouse

Aix-en-provence

Lyon

Paris

And international
development



Contact: 04.22.13.54.67 / contact@genvi.com



OUR VALUES



Passion for technology

Integrity

Work

Progressing together





OUR ADDED VALUE



Collaborators

- C.S.R Approach
- Personalized follow-up and listening to employees
- Dedicated sales and technical contact
- Professional equality
- Skills development and training
- Assistance in finding accommodation
- Opportunity to work on the robotics project

Clients

- C.S.R Policy
- Research tax credit,
- Innovation and technology at the heart of our DNA
- Support for the robotics project
- International team of experts
- Efficient communication regarding customer needs
- Client satisfaction

IT subcontractors

- C.S.R Approach

**Humanity at the heart
of our process**



Services in computer engineering,
embedded, AI



QENVI
iT





IT expertise



QENVI provides fixed-price or technical assistance services with the latest technologies.

EXPERTISES :

IT
Embedded
Robotics
AI
DEVOPS
BIGDATA

LANGUAGES :

Java
J2EE
PHP
C#/.NET
C++
PYTHON

And more ! ...

FRAMEWORKS :

SPRING
ANGULAR
NodeJS
React
SYMFONY
ROS

QENVI supports on your development projects, project management, testing, CI/CD.





AI Expertise



AI Expertise through our robotics R&D we implement AI techniques:

Deep Learning
Machine Learning

- Motion Control Algorithms
- Modern Artificial Intelligence Techniques





SERVICE TYPES



QENVI develops its clients' projects in dedicated offices, under the supervision of the client. Responsibilities are shared and depend on the agreements established in the subcontracting contract.

Proposal of experts or delegation (*QENVI chooses its collaborators*).
Management or co-management with the project client and teams.

KPI: Budget, deadlines, costs, risks, anomalies, quality of service and customer satisfaction.

Methods: Continuous improvement (PDAC), Strengthening indicators, Scrum Agility, Safe, Kanban.

Competence Center

(Assets allocation + commitment to results)

Technical Assistance

(Assets allocation)

QENVI offers the services of its experts to intervene on the internal projects of its clients, at its clients' premises

Resource proposal and integration
Management of services by the customer

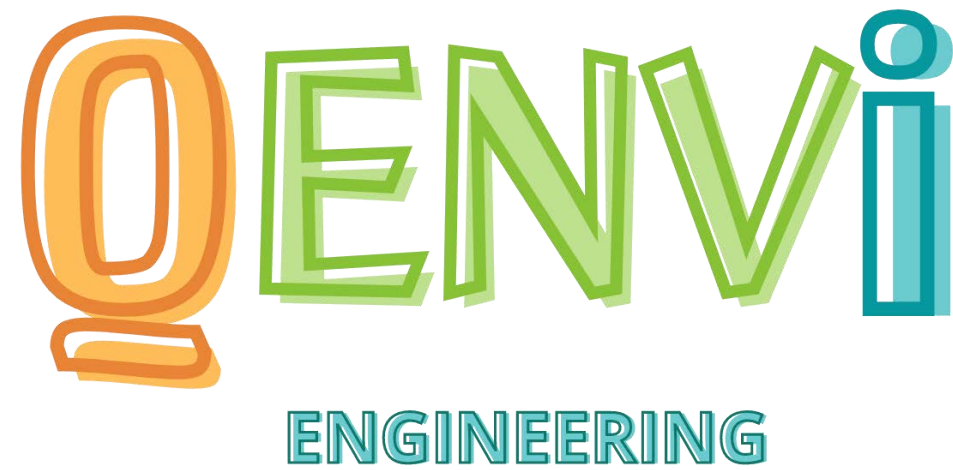
Establishment of personalized KPIs
Co-piloting of resources

QENVI manage the team and the project, it guarantees the smooth running and completion of developments

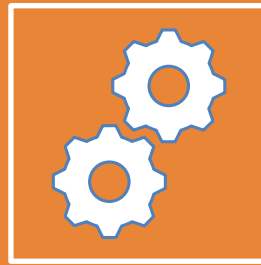
Steps: Study and analysis of customer requirements, specifications, planning and budgeting, development, testing, validation, acceptance, CI/CD, delivery, maintenance OR Agile.

Package

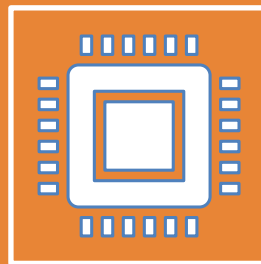
(Commitment to results)



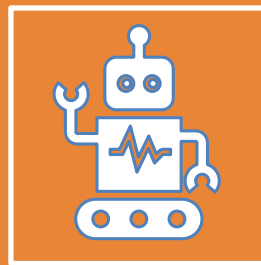
Our engineering office at your service!
At the heart of innovation



Mechanics



Electronics, Embedded



Robotics



MECHANICAL ENGINEERING

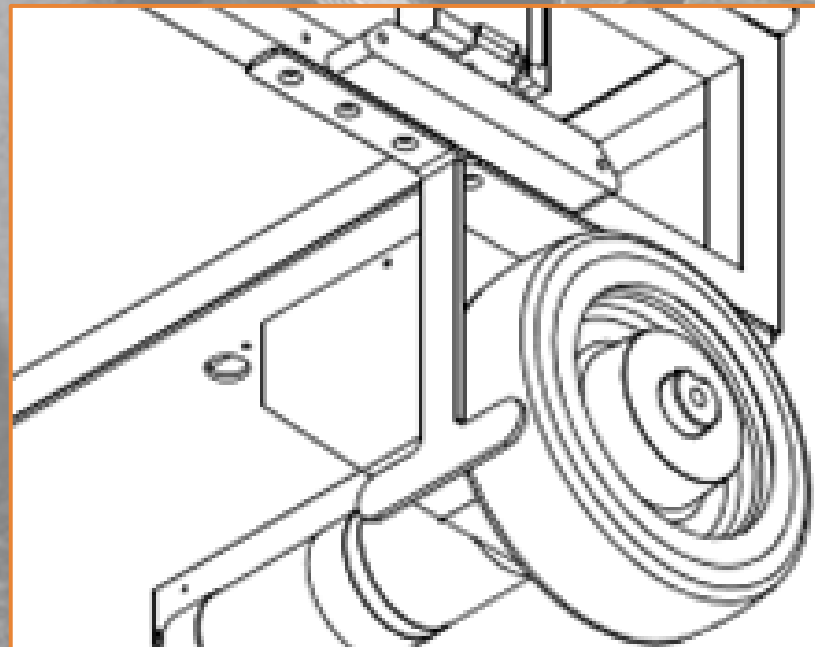
MAKE YOUR PROJECTS A REALITY

- Technical support from A to Z
- Specifications and requirements
- Requirements and constraints management
- Project management
- Multidisciplinary services
- Network of service provider partners



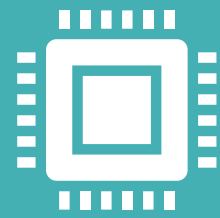
Prototyping and 3D printing

- Design and modeling
- CAD: SOLIDWORKS, FUSION360
- CAD design deliverable
- Printed Prototype

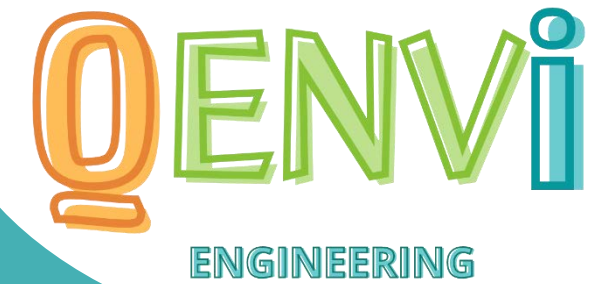


PRODUCTION PREPARATION

- 3D prototypes evolution
- Recommendations for production launch



ELECTRONIC ENGINEERING



Embedded computing: C, C++, FPGA, STM32...

Industrialization

Tests

Development

Assembly

Routing

Simulations

Definition of architecture

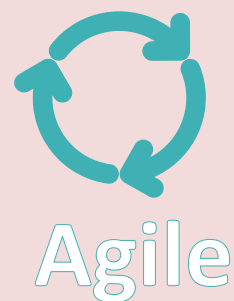
Planinng

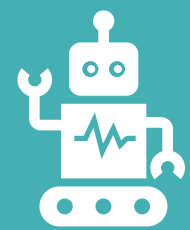
Specifications

Technical requirements

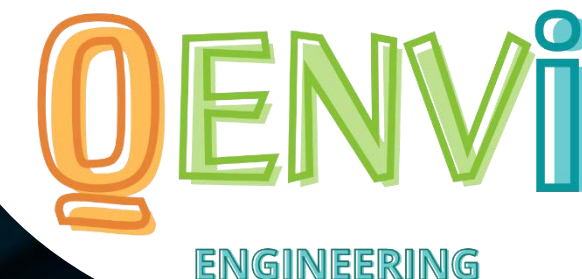
Prototyping
(.gerber, .bottom, .pos, PCB, ...) Kicad, Fusion360, ...

Subsystems:
Kicad, electronic cards, power supplies, rfid, UWB, bluetooth, lidar, camera, sonar, IMU, odometry...





ROBOTIC ENGINEERING

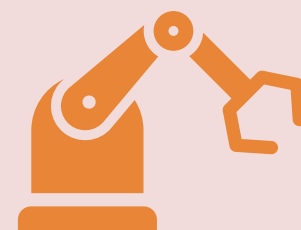


AMR robots: Autonomous Mobile Robot

- Following Robots
- Autonomous Robots
- Custom robots, robotization of your platforms
- Customizations

Robotic Arms

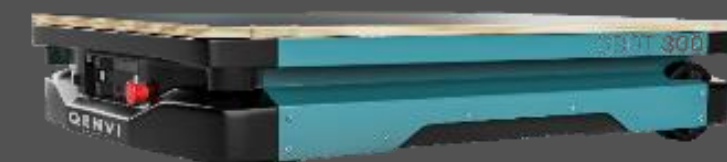
- Analysis of the carried load and arm length
- Degrees of freedom
- Required gripping functions
- Adaptation to the platform



Our engineering firm at your service!

Do you need **industrial machines** to transport loads?
Do you need **specific robotics developments** ?

Take advantage of our expertise at QENVI ROBOTICS and QENVI ENGINEERING



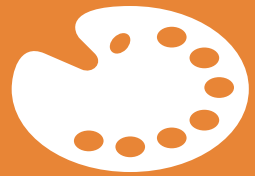
QENVI ROBOTICS

→ Artificial Intelligence at your service



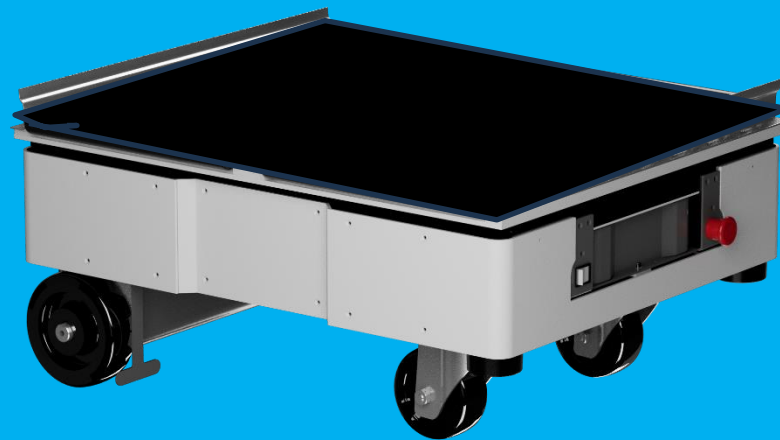
QENVI
ROBOTICS

At the heart of innovation



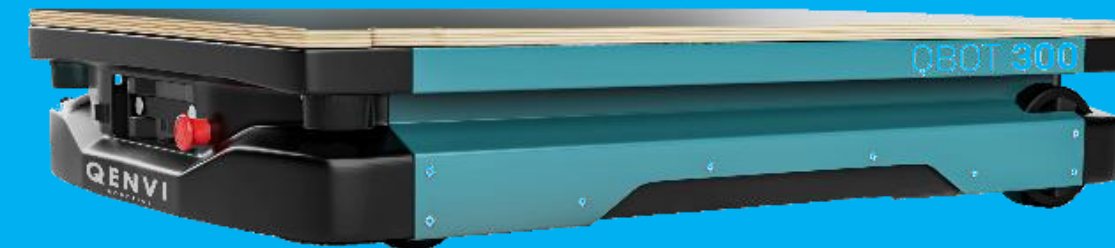
Our standard products: 2 customizable bases

Qbot150 is small and easy to handle.
It allows optimal maneuvers in the narrow aisles of your warehouse.



Can carry up to 150 kg

Impressive and easy to handle, put the Qbot300 to the test
when carrying your heaviest loads !

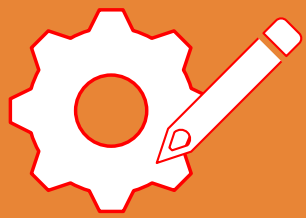


Can carry up to 300 kg

7h battery life. Rackable interchangeable battery

*All QENVI Robotics robots are CE certified according to European directives:
- Machinery, Radio Equipment, Low Voltage and Electro Magnetic Compatibility.*

(view ISO3691-4_driverless_cart)



Your tailor-made solutions

Transform the structure of your choice into a following and/or autonomous robot.

To carry loads up to 2 tons.

QENVI Robotics has already robotized :

- wheelchairs
- A hydraulic machine carrying 650kg.
- An all-terrain tracked mule

Send us your base to robotize

QENVI Robotics robotizes then sends your new machine back to you when it is ready.

Do you have an idea?

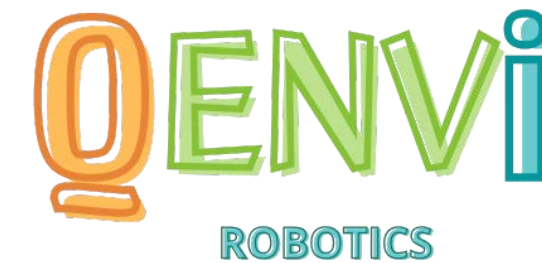


Let's discuss it !





Robot fleet management software



ID&Nom Robot

ENTREPOT

Is moving

Autonomy

Battery

Fire

Issue

1 robot 001

HAULOTTE



GO TO RECHARGE

No recharge point defined

FIRE POINT

Fire point



MORE...

DETAILS

CONFIG

MAPS

2 robot 002

HAULOTTE



GO TO RECHARGE

No recharge point defined

FIRE POINT

No firepoint defined



MORE...

DETAILS

CONFIG

MAPS

DESTINATIONS FOR THE ROBOT 1

Total number of destination(s) is: **11**

Click on your next destination

Chosen Circuit :

Standard

Start point

DESTINATION
: DEPART

DIRECT TO:
DEPART

Destination : atelier

DESTINATION
: TO DEFINE

DIRECT TO: TO
DEFINE

entrepot QENVI - Robot 1

NORMAL MODE

ADD A DESTINATION

ADD WAYPOINT

ADD LOADING POINT

FORBIDDEN AREA

ROBOT POSITION (KINDNAPPING)

REFRESH MAP

DELETE THE PATH

GO !

RETURN

JACKS UP

JACKS DOWN

STOP

9 destinations 2 waypoints



Start point

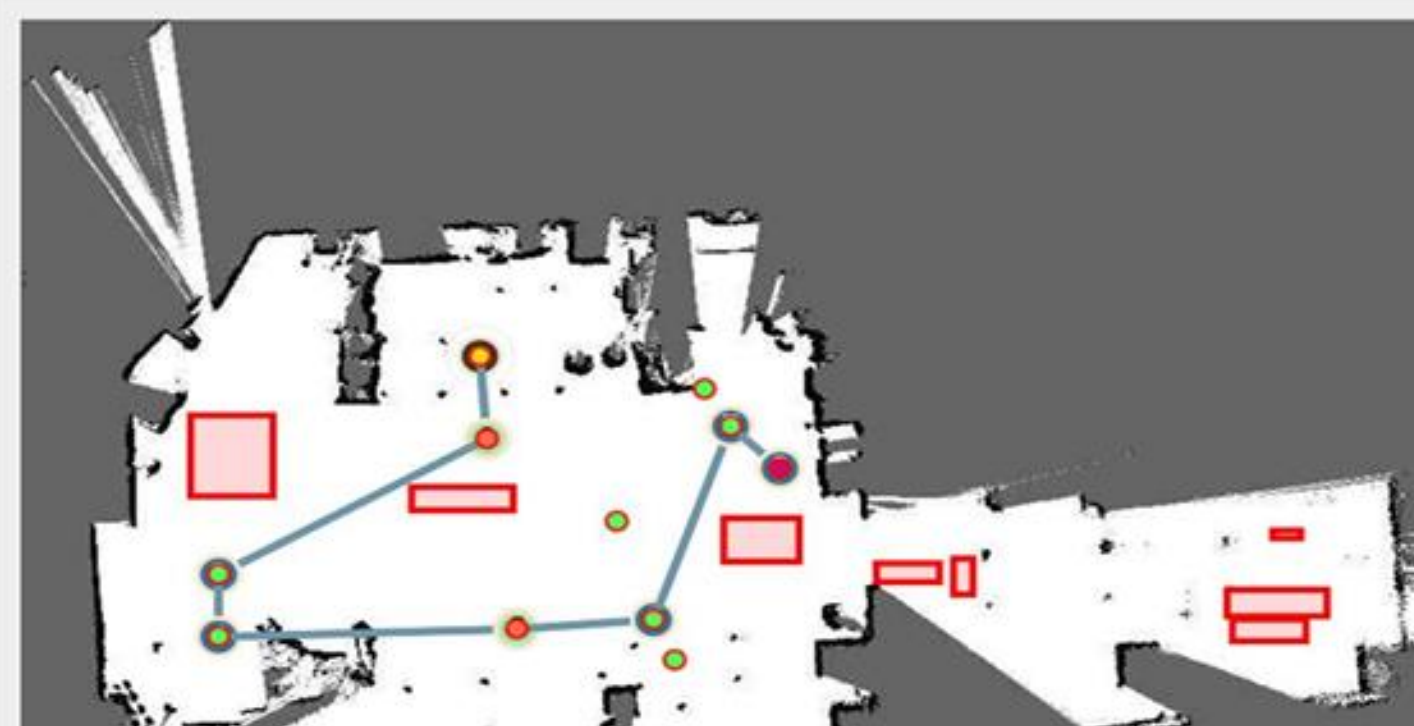
Intermediate point

Way point

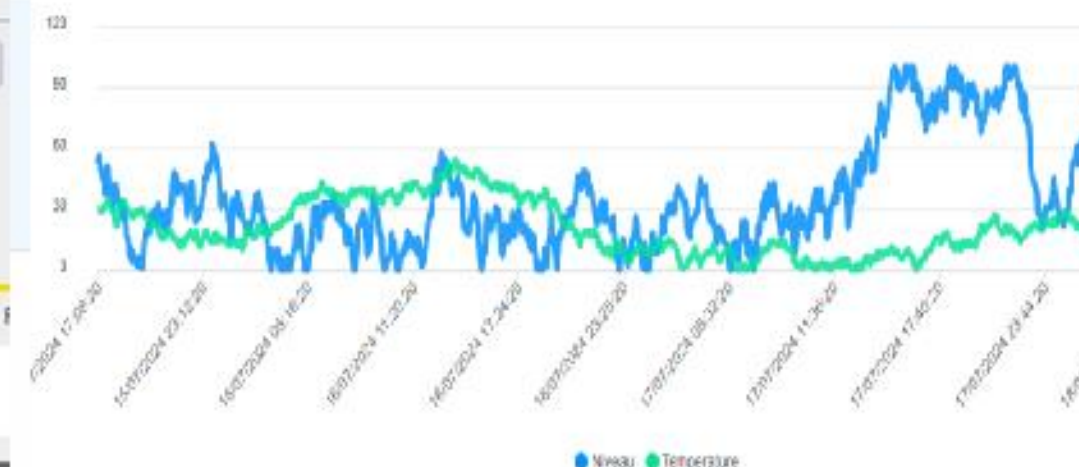
End point

Chosen Circuit : Standard

Selected path mode : ALL

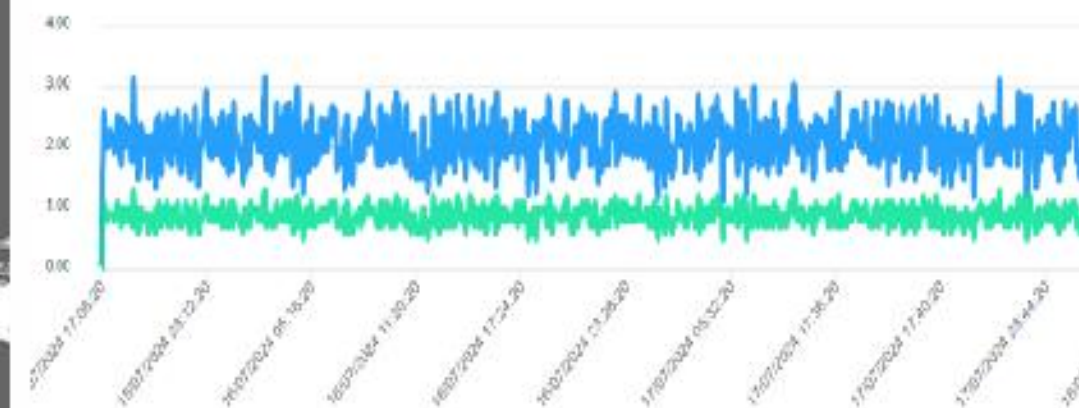


Température & Niveau batterie disponible



Distance (unité: m) & vitesse
Distance (unité: m) & vitesse

Distance (unité: m) & vitesse



QENVI MANAGEMENT





Maximizing the Efficiency of Your Processes



QENVI can intervene
in the various processes
of your company

Business strategy and efficiency of your
processes :

- Finance and accounting
- Marketing
- Commercial
- HR
- Communication
- QSE
- CSR

Projects management :

- Agility, Quality, Lean, 6Sigma
- Change management
- Crisis management



THANK YOU !

1240 route des Dolines,
BUROPOLIS 2 -RDC bas ,
06560 Valbonne - Sophia
Antipolis

<https://www.qenvigroup.com/>

+33 4 22 13 54 67 /
contact@qenvi.com

